

TO SEE A LANDSCAPE AS IT IS WHEN I AM NOT THERE
for two players

luke martin, august 2022

melodies & silences —

a list of little melodies, played together.
silences in between the melodies.
any number may be played.

quiet to somewhat quiet.
slowly.

all notes gently damped or fading by themselves.
pitch bends should be treated as pitch bends, i.e., $A = [A^b < A < A^#]$

each melody played by both players — one by one.
whoever begins a melody also ends it.

silences between notes in a melody may be of any duration.
silences between melodies may also be of any duration.

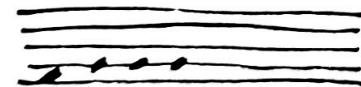
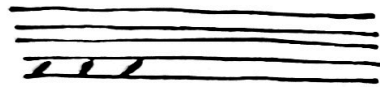
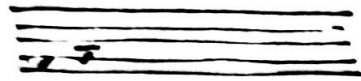
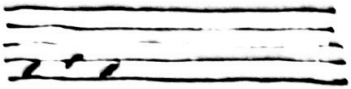
every once in a while, one player may be silent for a melody sequence.

notation —

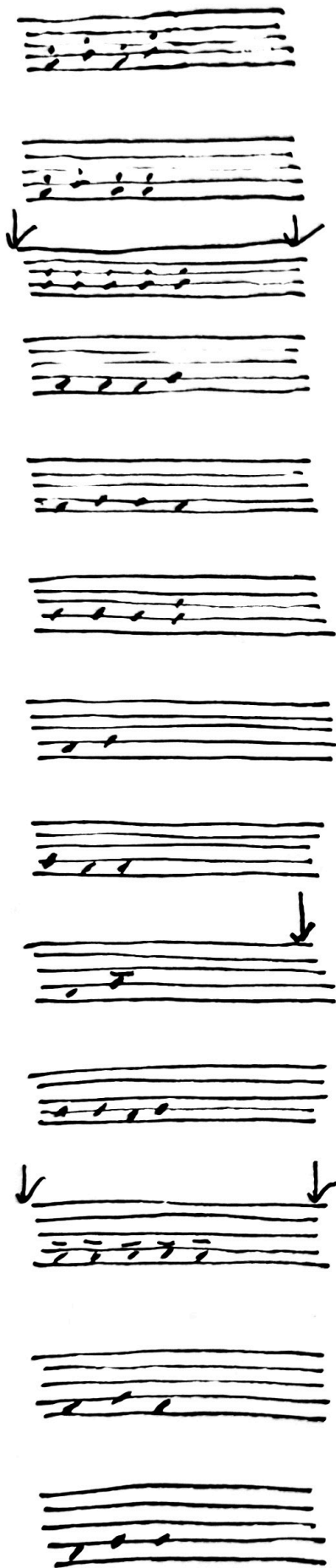
• = short; as in, a few moments or so
— = long; as in, sustained for any long duration
• = either short or long

↓ = at the start of a melody: cued unison start
at the end of a melody: cued unison end
at the start & end of a melody: cued unison start & end;
otherwise loosely together

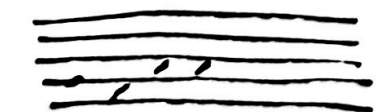
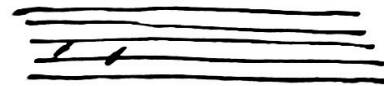
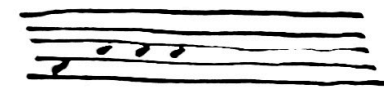
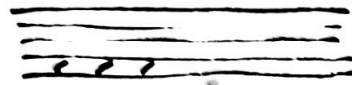
all written in treble clef.



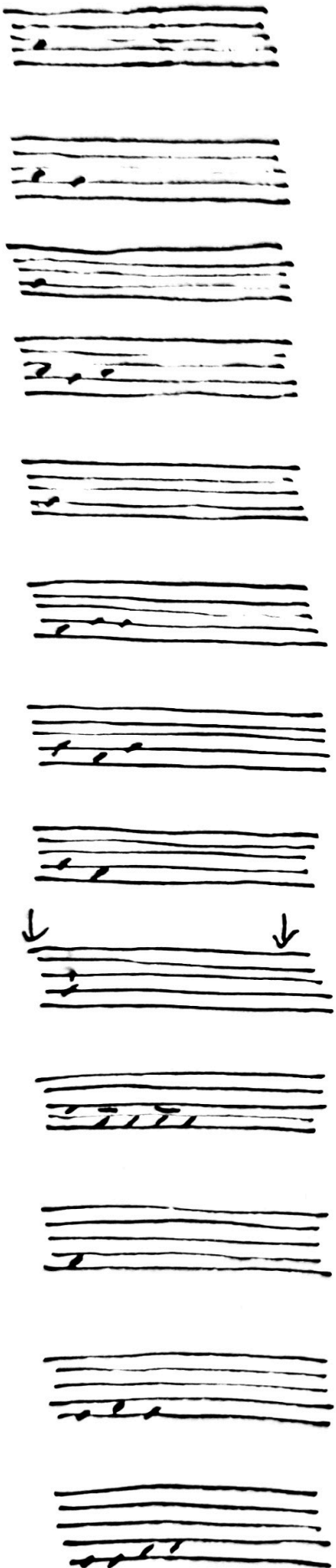
TO SEE A LANDSCAPE AS IT IS WHEN I AM NOT THERE



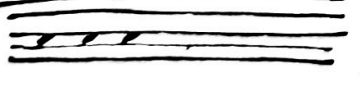
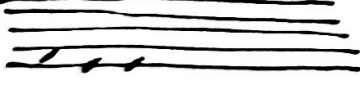
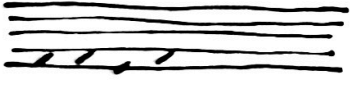
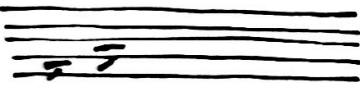
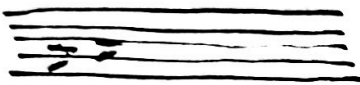
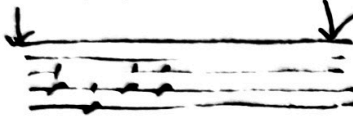
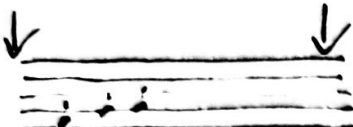
TO SEE A LANDSCAPE AS IT IS WHEN I AM NOT THERE



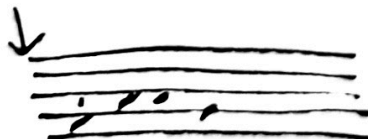
TO SEE A LANDSCAPE AS IT IS WHEN I AM NOT THERE



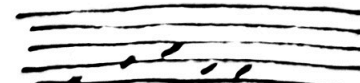
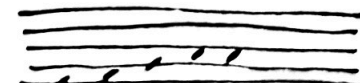
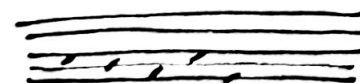
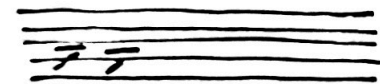
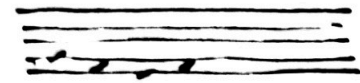
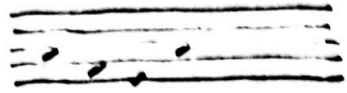
TO SEE A LANDSCAPE AS IT IS WHEN I AM NOT THERE



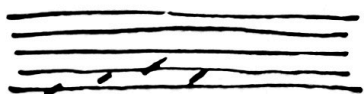
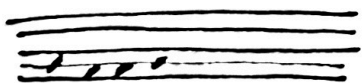
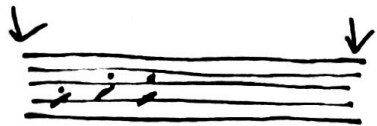
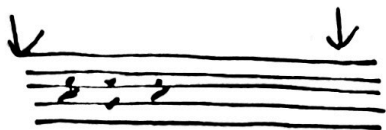
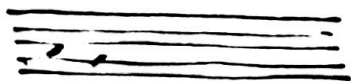
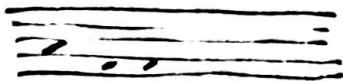
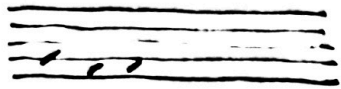
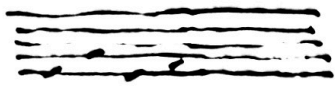
TO SEE A LANDSCAPE AS IT IS WHEN I AM NOT THERE



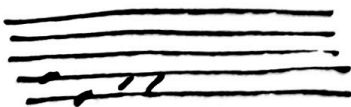
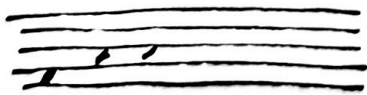
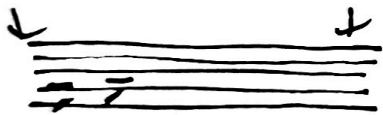
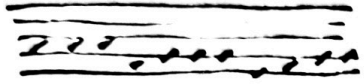
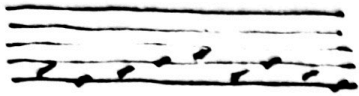
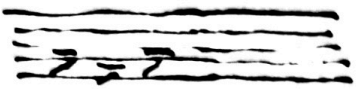
TO SEE A LANDSCAPE AS IT IS WHEN I AM NOT THERE



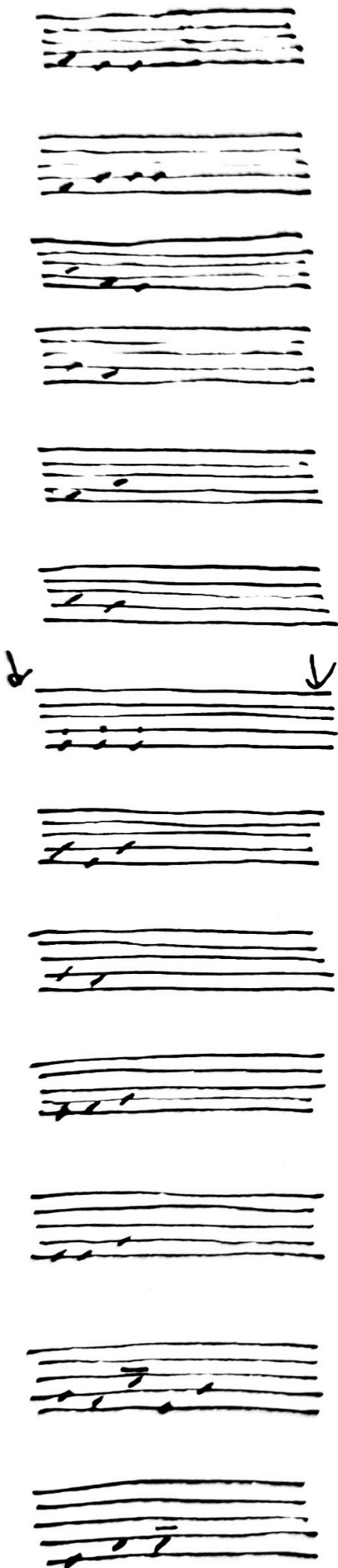
TO SEE A LANDSCAPE AS IT IS WHEN I AM NOT THERE



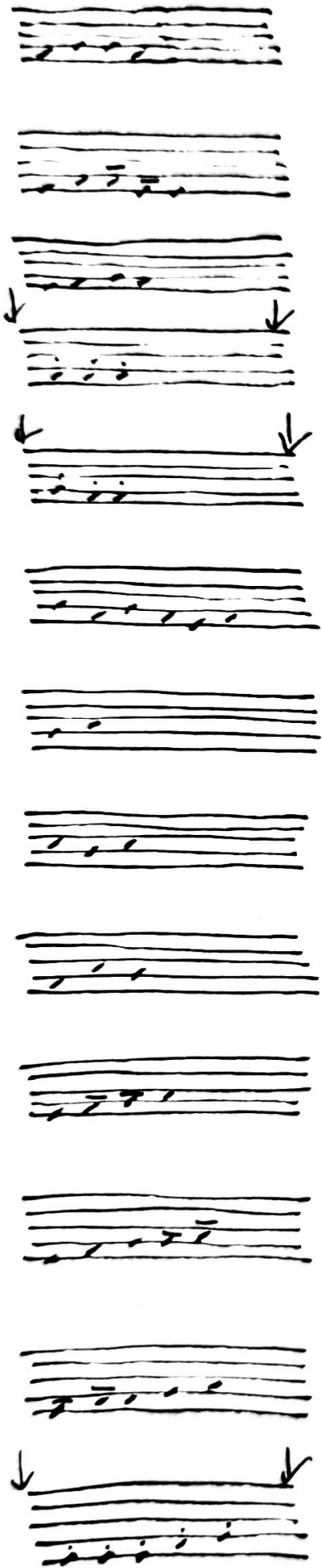
TO SEE A LANDSCAPE AS IT IS WHEN I AM NOT THERE



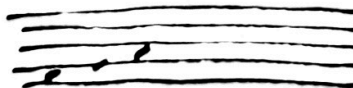
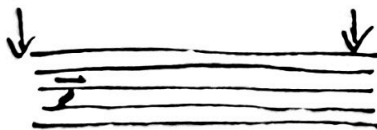
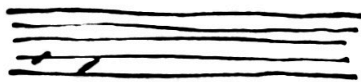
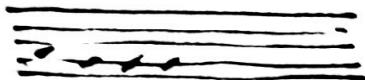
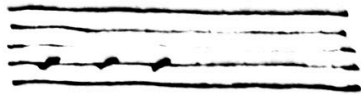
TO SEE A LANDSCAPE AS IT IS WHEN I AM NOT THERE



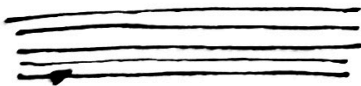
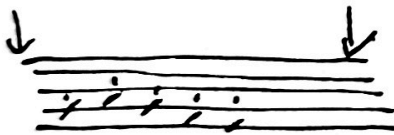
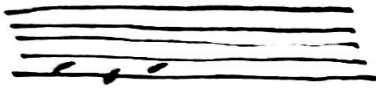
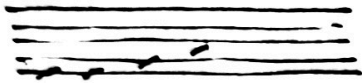
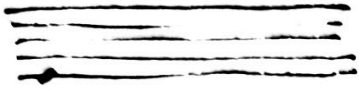
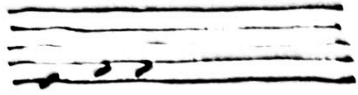
TO SEE A LANDSCAPE AS IT IS WHEN I AM NOT THERE



TO SEE A LANDSCAPE AS IT IS WHEN I AM NOT THERE



TO SEE A LANDSCAPE AS IT IS WHEN I AM NOT THERE



TO SEE A LANDSCAPE AS IT IS WHEN I AM NOT THERE