

AN EXTREMELY BRIGHT, EFFULGENT LIGHT ENGULFED ME  
for two players

luke martin / august 2022

ten chords, repeating, written in sequence at the top of each page.  
ten stanzas, played in any order + any number of them.

each stanza has several lines. lines consist of three things, arranged top to bottom in a list read left to right:  
letters (A, B, or C), reference timings, + reference chords. A = 30" B = 1' C = 2'.

two players divide each letter-duration in half. player one first, player two second.  
the letters correspond to the sequence of ten chords, which are played through in order + then repeated, etc.  
for instance: if line 1 reads [A A B C A] + line 2 [A B B] then the first line would move through  
the first 5 chords + the second the next 3 (i.e., chord 6, 7, + 8).

players draw notes from the corresponding chord in the sequence in the following way:  
one, or two notes simultaneously.  
once or twice in a half, perhaps more.  
any time within the half.  
quiet to somewhat quiet. any octave. pitch zones, i.e., A = Ab > A > A#.

perhaps once or twice play during both halves.  
once in a while + silence during a half.

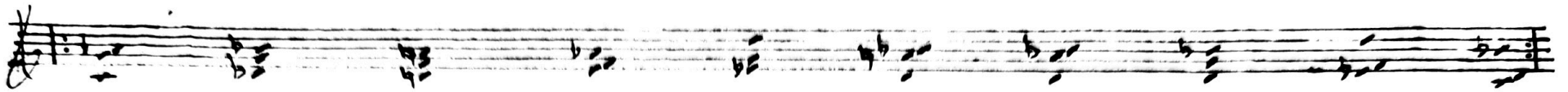
between stanzas a ~~small~~ pause of maybe a minute, maybe less (untimed).

timers should be used.

each line indicates timings for reference: the starts of each letter-duration below the line + halfway point above.

a ten second pause is notated between lines.

the beginning of each new stanza requires the stopwatch to be restarted, with a cued entrance.

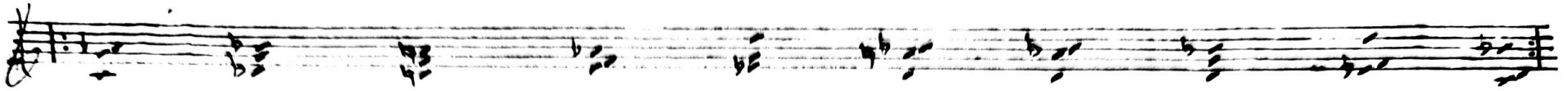


H)

A 0'15 A 0'45 | (1'10)

C 2'10 C 4'10 A 5'25 B 6'10 B 7'10 | (7'50)

A 8'05 B 8'50 A 9'35 C 10'50 C 12'50 A 14'05 | (14'50)



II)

B 0'30 A 1'15 A 1'45 B 2'30 B 3'30 A 4'15 A 4'30 4'45 5' (5'10)

C 6'10 B 7'10 B 8'40 B 9'40 A 10'25 10'40 (10'50)

C 11'50 A 13'05 C 14'20 A 15'35 A 16'05 B 16'50 17'20 (17'30)



III

0:30 B 1:30 B 2:40 A 3:15 A 3:45 C 5' B 6:30 7' (7:10)

A musical staff with handwritten time markers and chord labels above it. The time markers are: 0:30, B, 1:30, B, 2:40, A, 3:15, A, 3:45, C, 5', B, 6:30, 7', and (7:10). Below the staff, there are seven sets of musical notation, each corresponding to a time marker. The notation includes chords and melodic lines. A large bracket is drawn under the 7' and (7:10) markers. To the left of the staff, there are some handwritten symbols, including a stylized 'III' at the top and a symbol resembling a right-pointing arrow with a curved tail at the bottom.



IV)

A 0'15 C 1'30 A 2'45 3' (3'10)

A 3'10 B 4'10 B 5'10 C 6'40 B 8'10 B 9'10 C 10'40 A 11'55 C 13'10 C 15'10 (16'20)

C 17'20 B 18'50 C 20'20 C 22'20 C 24'20 B 25'50 B 26'50 C 28'20 A 29'55 (30')



(V)

Handwritten musical notation and time markers. The notation includes a treble clef, a key signature of one flat, and a common time signature (C). The piece is divided into sections labeled A and B. Time markers are written below the staff: 1', 2'15, 2'30, 3'30, and (3'40). There are also some horizontal lines above the staff, possibly indicating phrasing or breath marks.



VI) C 1' A 2'15 C 3'30 B 5' B 6' A 6'45 C 8' 9' (9'10)

B 9'40 B 10'40 B 11'40 B 12'40 B 13'10 (13'20)

B 13'50 C 15'20 A 16'35 C 17'50 18'50 (19')

C (20') B 21'30 B 22'50 B 23'50 B 24'30 C 26' B 27'30 B 28'30 B 29'30 C 31' 32' (32'10)

VII)

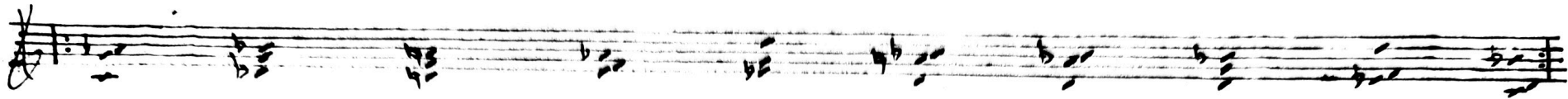
Handwritten musical notation on a single staff, featuring various chords and melodic lines.

VI)

Handwritten musical notation on two staves, showing a sequence of chords with time signatures and chord labels.

Staff	Chord Label	Time Signature	Notes
1	B	0'30	B
1	B	1'30	B
1	B	2'30	B
1		3' (3'10)	
2	C	3'10	C
2	B	4'10	B
2	B	5'40	B
2	C	7'10	C
2	C	8'10	C
2	C	9'10	C
2	A	10'25	A
2	B	10'40	B
2	B	11'10	B
2		11'40	
2		(11'50)	





VIII)

B 0:30 C 2: B 3:30  
0' 1' 3' 4' (4'10)

A 4:25 C 5:40 A 6:55  
4'10 4'40 6'40 7'10 (7'20)

B 7:50 A 8:55 B 9:20 A 10:05 B 10:50 C 12:20 A 15:35  
7'20 8'20 8'50 9'50 10'20 10'50 11'20 12'20 13'50 (14')

A 14:15 B 15: B 16: C 17:30  
14' 14'30 15' 16' 17'30 18'30 (18'40)

C 19:40 A 20:55 A 21:25 B 22:10  
18'40 20'40 21'10 21'40 22'40 (22'50)

C 23:50 B 25:20 A 26:05  
22'50 24'50 25'50 26'20 (26'30)



II

C 1' C 3' B 4'30 C 5' A 7'15 A 7'45 C 8' A 10' A 10'30 B 11'50 12' (12'10)

